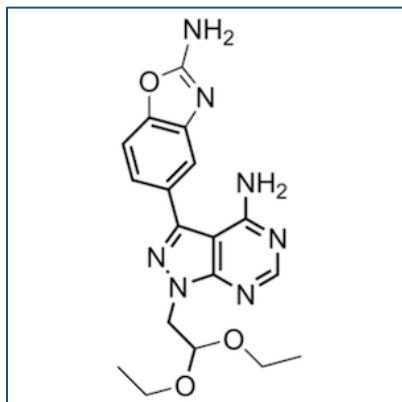


Chemical Probe Reagent Authentication Certificate



[The Chemical Probes Portal](#) endorses **eCF309** for use as a chemical probe in cells.

eCF309



Protein target name: MTOR

Target class: Protein kinase/Atypical

SMILES string: CCOC(C[N]1N=C(C2=CC3=C(OC(=N3)N)C=C2)C4=C1N=CN=C4N)OCC

InChi Key: PSICWGWNI0OULV-UHFFFAOYSA-N

Control compound: N/A

Recommendations for use

Recommended Concentration for use in cells: 20-50 nM

This probe is not recommended for use in animal models.