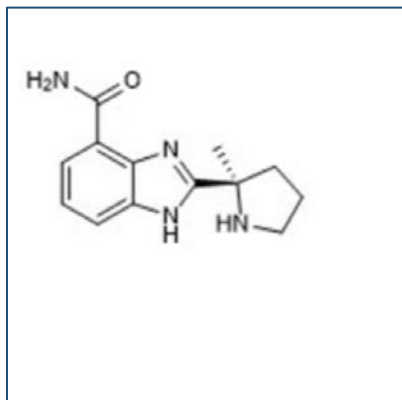


# Chemical Probe Reagent Authentication Certificate



[The Chemical Probes Portal](#) endorses **Veliparib** for use as a chemical probe in cells.

## Veliparib



**Protein target name:** PARP1, PARP2

**Target class:** Other post-translational modification/PARP

**SMILES string:** C[C@@]1(CCCN1)C2=NC3=C(C=CC=C3N2)C(=O)N

**InChi Key:** JNAHVYVRKWKWKQ-CYBMUJFWSA-N

**Control compound:** N/A

## Recommendations for use

Recommended Concentration for use in cells: 10-100 nM

This probe is also endorsed for use in mice and rats.