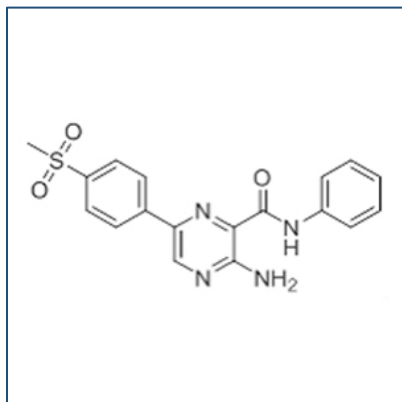


Chemical Probe Reagent Authentication Certificate



[The Chemical Probes Portal](#) endorses **VE-821** for use as a chemical probe in cells.

VE-821



Protein target name: ATR

Target class: Protein kinase/Atypical

SMILES string: CS(=O)(=O)C1=CC=C(C=C1)C2=CN=C(C(=N2)C(=O)NC3=CC=CC=C3)N

InChi Key: DUIHHZKTCSTGM-UHFFFAOYSA-N

Control compound: N/A

Recommendations for use

Recommended Concentration for use in cells: 100 nM - 1 μ M

This probe is not recommended for use in animal models.