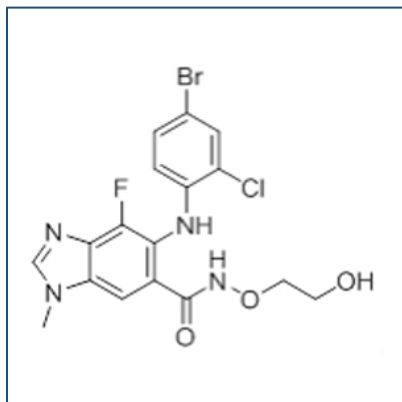


Chemical Probe Reagent Authentication Certificate



[The Chemical Probes Portal](#) endorses **Selumetinib** for use as a chemical probe in cells.

Selumetinib



Protein target name: MAP2K1

Target class: Protein kinase/STE

SMILES string: CN1C=NC2=C1C=C(C(=C2F)NC3=C(C=C(C=C3)Br)Cl)C(=O)NOCCO

InChi Key: CYOHGALHFOKKQC-UHFFFAOYSA-N

Control compound: N/A

Recommendations for use

Recommended Concentration for use in cells: 10 nM - 200 nM

This probe is also endorsed for use in mice.