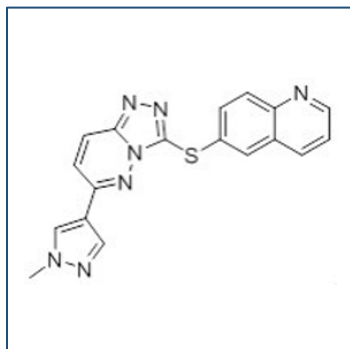


# Chemical Probe Reagent Authentication Certificate



[The Chemical Probes Portal](#) endorses **SGX-523** for use as a chemical probe in cells.

## SGX-523



**Protein target name:** MET

**Target class:** Protein kinase/Tyrosine Kinase

**SMILES string:** CN1C=C(C=N1)C2=NN3C(=NN=C3SC4=CC5=C(C=C4)N=CC=C5)C=C2

**InChi Key:** BCZUAADEACICHN-UHFFFAOYSA-N

**Control compound:** N/A

## Recommendations for use

Recommended Concentration for use in cells: 1 nM - 1 uM

This probe is also endorsed for use in mice.