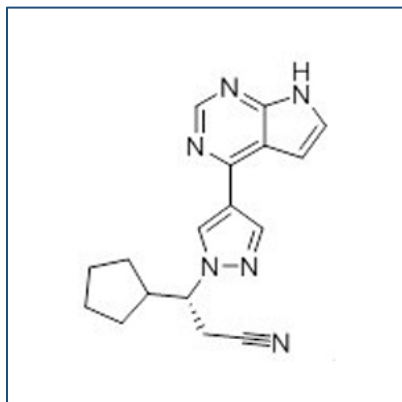


Chemical Probe Reagent Authentication Certificate



[The Chemical Probes Portal](#) endorses **Ruxolitinib** for use as a chemical probe in cells.

Ruxolitinib



Protein target name: JAK1, JAK2

Target class: Protein kinase/Tyrosine Kinase

SMILES string: C1CCC(C1)[C@@H](CC#N)N2C=C(C=N2)C3=C4C=CNC4=NC=N3

InChi Key: HFNKQEVNSGCOJV-OAHLLOKOSA-N

Control compound: N/A

Recommendations for use

Recommended Concentration for use in cells: 5 nM - 1 uM

This probe is also endorsed for use in mice.