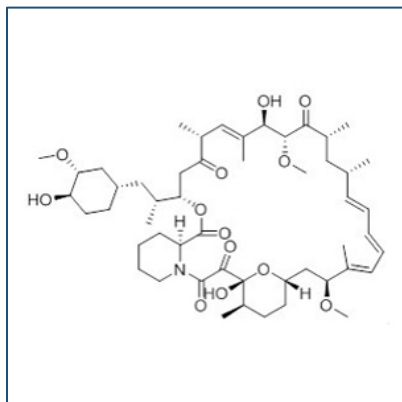


Chemical Probe Reagent Authentication Certificate



[The Chemical Probes Portal](#) endorses **Rapamycin** for use as a chemical probe in cells.

Rapamycin



Protein target name: MTOR

Target class: Protein kinase/Atypical

SMILES string:

```
C[C@@H]1CC[C@H]2C[C@@H](/C=C/C=C/C=C/[C@H](C[C@H](C(=O)[C@@H]([C@@H]/C=C/[C@H](C(=O)C[C@H](OC(=O)[C@@H]3CCCCN3C(=O)C(=O)[C@@]1(O2)O)[C@H](C)C[C@@H]4CC[C@H]([C@@H](C4)OC)O)C)/C)O)OC)C)/C)OC
```

InChi Key: QFJCIRLUMZQUOT-HPLJOQBZSA-N

Control compound: N/A

Recommendations for use

Recommended Concentration for use in cells: 1 nM - 200 nM

This probe is also endorsed for use in mice.