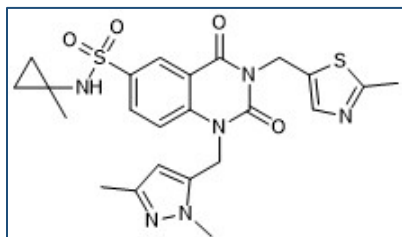


Chemical Probe Reagent Authentication Certificate



[The Chemical Probes Portal](#) endorses **PDD00017273** for use as a chemical probe in cells.

PDD00017273



Protein target name: PARG

Target class: DNA replication & repair enzyme

SMILES string: CC1=NN(C=C1)CN2C3=C(C=C(C=C3)S(=O)(=O)NC4(CC4)C)C(=O)N(C2=O)CC5=CN=C(S5)C

InChi Key: IFWUBRBMMNTBRZ-UHFFFAOYSA-N

Control compound: N/A

Recommendations for use

Recommended Concentration for use in cells: Up to 10 μ M, or 10X the cellular IC_{50} depending on the cell line

This probe is not recommended for use in animal models.