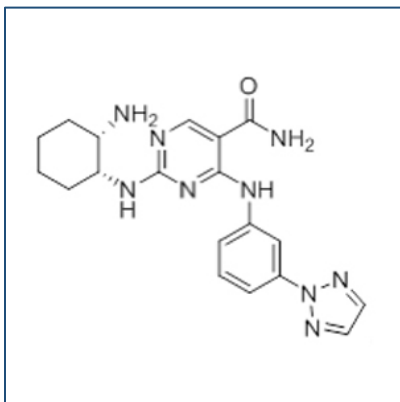


# Chemical Probe Reagent Authentication Certificate



[The Chemical Probes Portal](#) endorses **P505-15** for use as a chemical probe in cells.

## P505-15



**Protein target name:** SYK

**Target class:** Protein kinase/Tyrosine Kinase

**SMILES string:** C1CC[C@H]([C@H](C1)N)NC2=NC=C(C(=N2)NC3=CC=CC(=C3)N4N=CC=N4)C(=O)N

**InChi Key:** TXGKRVFSSHPBAJ-JKSUJKDBSA-N

**Control compound:** N/A

## Recommendations for use

Recommended Concentration for use in cells: 100 nM - 2 uM

This probe is also endorsed for use in mice.