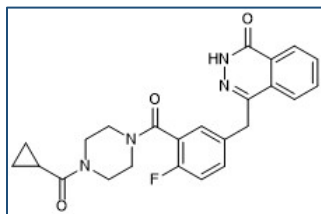


Chemical Probe Reagent Authentication Certificate



[The Chemical Probes Portal](#) endorses **Olaparib** for use as a chemical probe in cells.

Olaparib



Protein target name: PARPs

Target class: Other post-translational modification/PARP

SMILES string: C1CC1C(=O)N2CCN(CC2)C(=O)C3=C(C=CC(=C3)CC4=NNC(=O)C5=CC=CC=C54)F

InChi Key: FDLYAMZZIXQODN-UHFFFAOYSA-N

Control compound: N/A

Recommendations for use

Recommended Concentration for use in cells: 10-300 nM

This probe is also endorsed for use in mice.