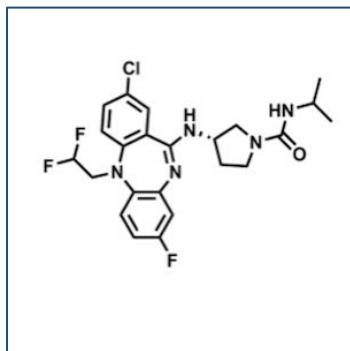


Chemical Probe Reagent Authentication Certificate



[The Chemical Probes Portal](#) endorses **NVS-PAK1-1** for use as a chemical probe in cells.

NVS-PAK1-1



Protein target name: PAK1

Target class: Protein kinase/STE

SMILES string: CC(C)NC(=O)N1CCC(C1)NC2=NC3=C(C=CC(=C3)F)N(C4=C2C=C(C=C4)Cl)CC(F)F

InChi Key: OINGHOPGNMYCAB-INIZCTEOSA-N

Control compound: N/A

Recommendations for use

Recommended Concentration for use in cells: 400 nM - 2 uM

This probe is not recommended for use in animal models.