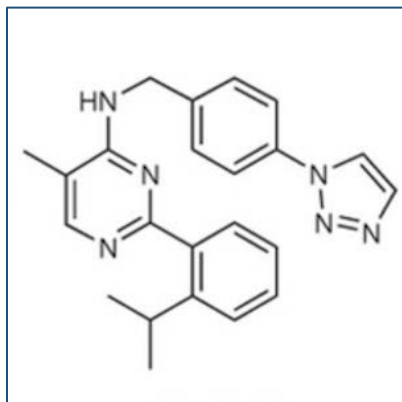


Chemical Probe Reagent Authentication Certificate



[The Chemical Probes Portal](#) endorses **ML323** for use as a chemical probe in cells.

ML323



Protein target name: USP1, WDR48

Target class: Other post-translational modification/ Deubiquitinase

SMILES string: CC1=CN=C(N=C1NCC2=CC=C(C=C2)N3C=CN=N3)C4=CC=CC=C4C(C)C

InChi Key: VUIRVWPJNKZOSS-UHFFFAOYSA-N

Control compound: NCGC-959

Recommendations for use

Recommended Concentration for use in cells: 250-20,000 nM

This probe is not recommended for use in animal models.