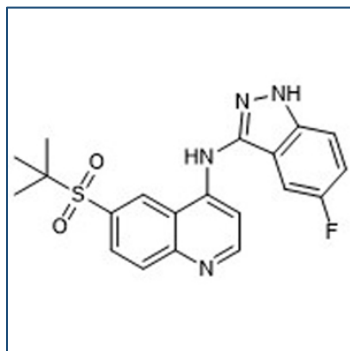


Chemical Probe Reagent Authentication Certificate



[The Chemical Probes Portal](#) endorses **GSK583** for use as a chemical probe in cells.

GSK583



Protein target name: RIPK2

Target class: Protein kinase/AGC

SMILES string: CC(C)(C)S(=O)(=O)C1=CC2=C(C=CN=C2C=C1)NC3=NNC4=C3C=C(C=C4)F

InChi Key: XLOGLWKOHPIJLV-UHFFFAOYSA-N

Control compound: N/A

Recommendations for use

Recommended Concentration for use in cells: 200 nM

This probe is also endorsed for use in mice.