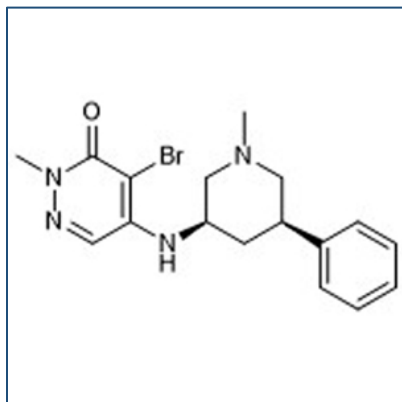


# Chemical Probe Reagent Authentication Certificate



[The Chemical Probes Portal](#) endorses **GSK4027** for use as a chemical probe in cells.

## GSK4027



**Protein target name:** PCAF, GCN5

**Target class:** Epigenetics/Bromodomain

**SMILES string:** O=C1C(Br)=C(N[C@@H]2C[C@H](C3=CC=CC=C3)CN(C)C2)C=NN1C

**InChi Key:** N/A

**Control compound:** GSK4028

## Recommendations for use

Recommended Concentration for use in cells: 50 nM - 1  $\mu$ M

This probe is not recommended for use in animal models.