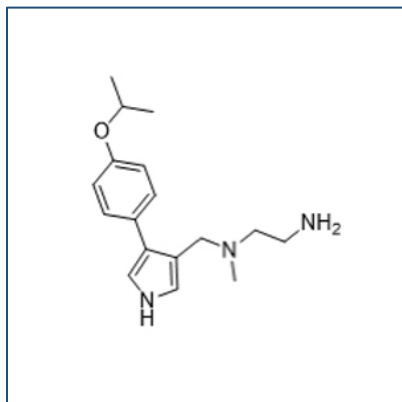


Chemical Probe Reagent Authentication Certificate



[The Chemical Probes Portal](#) endorses **GSK343** for use as a chemical probe in cells.

GSK343



Protein target name: EZH2

Target class: Epigenetics/Protein methyltransferase

SMILES string:

CCCC1=C(C(=O)NC(=C1)C)CNC(=O)C2=C3C=NN(C3=CC(=C2)C4=CC(=NC=C4)N5CCN(CC5)C)C(C)C

InChi Key: ULNXAWLQFZMIHX-UHFFFAOYSA-N

Control compound: N/A

Recommendations for use

Recommended Concentration for use in cells: 100 nM - 3 μ M

This probe is not recommended for use in animal models.