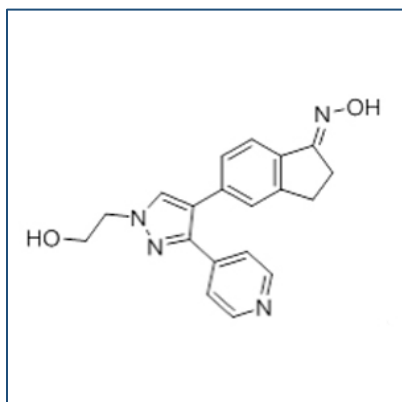


Chemical Probe Reagent Authentication Certificate



[The Chemical Probes Portal](#) endorses **GDC-0941** for use as a chemical probe in cells.

GDC-0941



Protein target name: PIK3CA, PIK3CD

Target class: Lipid kinase/Class I

SMILES string: CS(=O)(=O)N1CCN(CC1)CC2=CC3=C(S2)C(=NC(=N3)C4=C5C=NNC5=CC=C4)N6CCOCC6

InChi Key: LHNIIDJUOCFXAP-UHFFFAOYSA-N

Control compound: N/A

Recommendations for use

Recommended Concentration for use in cells: 10 nM - 500 nM

This probe is also endorsed for use in mice for xenograft assays.