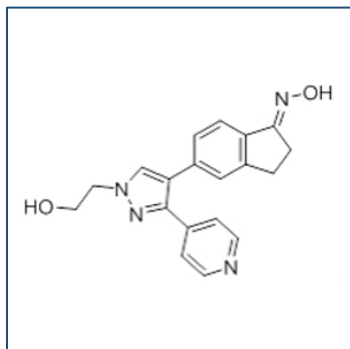


# Chemical Probe Reagent Authentication Certificate



[The Chemical Probes Portal](#) endorses **GDC-0879** for use as a chemical probe in cells.

## GDC-0879



**Protein target name:** BRAF V600E

**Target class:** Protein kinase/ TKL

**SMILES string:** C1C/C(=N\O)/C2=C1C=C(C=C2)C3=CN(N=C3C4=CC=NC=C4)CCO

**InChi Key:** DEZZLWQELQORIU-RELWKKBWSA-N

**Control compound:** N/A

## Recommendations for use

Recommended Concentration for use in cells: 1-300 nM

This probe is not recommended for use in animal models.