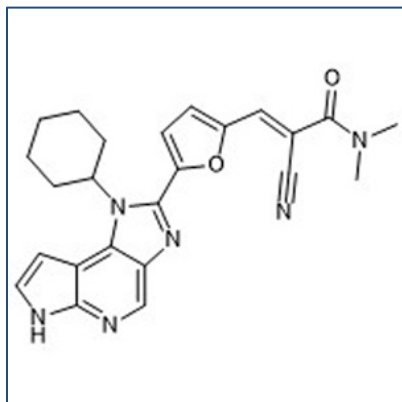


# Chemical Probe Reagent Authentication Certificate



[The Chemical Probes Portal](#) endorses **FM-381** for use as a chemical probe in cells.

## FM-381



**Protein target name:** JAK3

**Target class:** Protein kinase/Tyrosine Kinase

**SMILES string:** N(C)(C)C(C(\C#N)=C\C(=CC=C1C2N(C(C(N=2)=C2)=C(C(=N2)N2)C=C2)C(C2)CCCC2)O1)=O

**InChi Key:** GJMZWYLOARVASY-NTCAYCPXSA-N

**Control compound:** FM-479

## Recommendations for use

Recommended Concentration for use in cells: 100 nM - 1  $\mu$ M

This probe is not recommended for use in animal models.