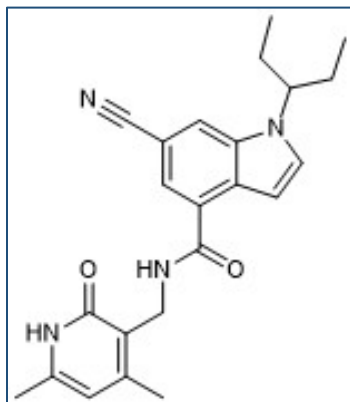


Chemical Probe Reagent Authentication Certificate



[The Chemical Probes Portal](#) endorses **EI1** for use as a chemical probe in cells.

EI1



Protein target name: EZH2

Target class: Epigenetics/ Protein methyltransferase

SMILES string: CCC(CC)N1C=CC2=C(C=C(C=C21)C#N)C(=O)NCC3=C(C=C(NC3=O)C)C

InChi Key: PFHDWRIVDDIFRP-UHFFFAOYSA-N

Control compound: N/A

Recommendations for use

Recommended Concentration for use in cells: Up to 1 μ M

This probe is not recommended for use in animal models.