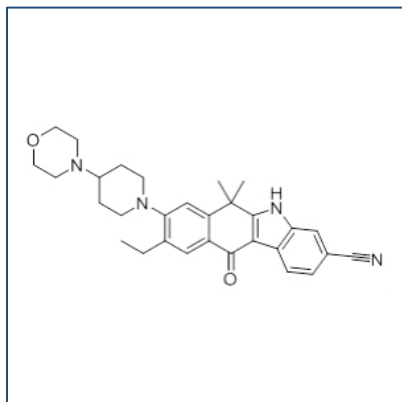


Chemical Probe Reagent Authentication Certificate



[The Chemical Probes Portal](#) endorses **CH5424802** for use as a chemical probe in cells.

CH5424802



Protein target name: ALK

Target class: Protein kinase/Tyrosine kinase

SMILES string: CCC1=C(C=C2C(=C1)C(=O)C3=C(C2(C)C)NC4=C3C=CC(=C4)C#N)N5CCCC(CC5)N6CCOCC6

InChi Key: KDGFLJKFZUIJMX-UHFFFAOYSA-N

Control compound: N/A

Recommendations for use

Recommended Concentration for use in cells: Up to 50 nM

This probe is also endorsed for use in mice.