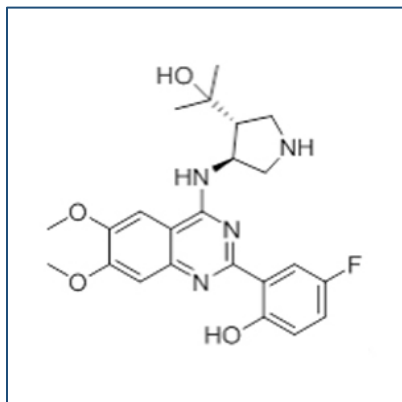


## Chemical Probe Reagent Authentication Certificate



[The Chemical Probes Portal](#) endorses **CCT241533** for use as a chemical probe in cells.

CCT241533



**Protein target name:** CHEK2

**Target class:** Protein kinase/CAMK

**SMILES string:** CC(C)([C@@H]1CNC[C@H]1NC2=N/C(=C\3/C=C(C=CC3=O)F)/NC4=CC(=C(C=C42)OC)OC)O

**InChi Key:** IXTQNaNZDPZION-GSOOIRJSA-N

**Control compound:** N/A

### Recommendations for use

Recommended Concentration for use in cells: 500 nM - 5 uM

This probe is not recommended for use in animal models.