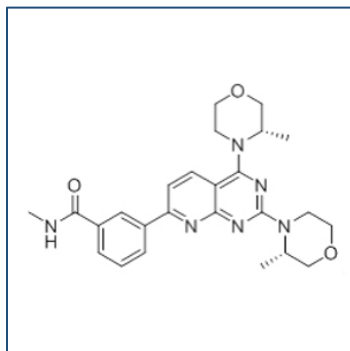


# Chemical Probe Reagent Authentication Certificate



[The Chemical Probes Portal](#) endorses **AZD2014** for use as a chemical probe in cells.

## AZD2014



**Protein target name:** MTOR

**Target class:** Protein kinase/ Atypical

**SMILES string:** C[C@H]1COCCN1C2=NC(=NC3=C2C=CC(=N3)C4=CC(=CC=C4)C(=O)NC)N5CCOC[C@@H]5C

**InChi Key:** JUSFANSTBFGBAF-IRXDYDNUSA-N

**Control compound:** N/A

## Recommendations for use

Recommended Concentration for use in cells: 10 nM - 2  $\mu$ M

This probe is also endorsed for use in mice.