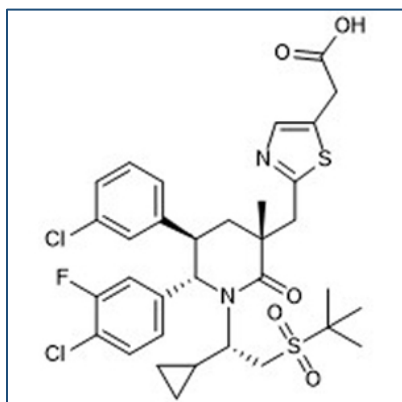


Chemical Probe Reagent Authentication Certificate



[The Chemical Probes Portal](#) endorses **AM-6761** for use as a chemical probe in cells.

AM-6761



Protein target name: MDM2

Target class: Other post-translational modification/E3 ubiquitin ligase

SMILES string:

```
C[C@@]1(C[C@@H]([C@H](N(C1=O)[C@H](CS(=O)(=O)C(C)(C)C)C2CC2)C3=CC(=C(C=C3)Cl)F)C4=CC(=CC=C4)Cl)CC5=NC=C(S5)CC(=O)O
```

InChi Key: HNLHOKSDTBAERS-CWIPYCOQSA-N

Control compound: N/A

Recommendations for use

Recommended Concentration for use in cells: 20 nM - 1 uM

This probe is also endorsed for use in mice.