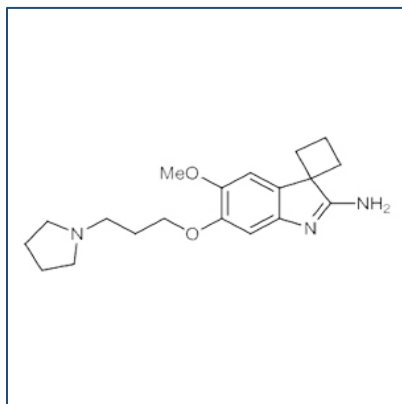


Chemical Probe Reagent Authentication Certificate



[The Chemical Probes Portal](#) endorses **A-366** for use as a chemical probe in cells.

A-366



Protein target name: EHMT2, EHMT1

Target class: Epigenetics/Protein methyltransferase

SMILES string: COC1=C(C=C2C(=C1)C3(CCC3)C(=N2)N)OCCCN4CCCC4

InChi Key: BKCDJTRMYWSXMC-UHFFFAOYSA-N

Control compound: DS607

Recommendations for use

Recommended Concentration for use in cells: 300 nM - 5 μ M

This probe is not recommended for use in animal models.