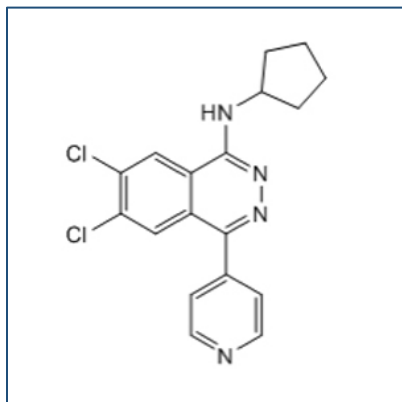


Chemical Probe Reagent Authentication Certificate



[The Chemical Probes Portal](#) endorses **A-196** for use as a chemical probe in cells.

A-196



Protein target name: KMT5B, KMT5C

Target class: Epigenetics/Protein methyltransferase

SMILES string: ClC1=C(Cl)C=C(C2=CC=NC=C2)=NN=C3NC4CCCC4)C3=C1

InChi Key: ABGOSOMRWSYAQB-UHFFFAOYSA-N

Control compound: SGC2043, A-197

Recommendations for use

Recommended Concentration for use in cells: 500-1000 nM

This probe is not recommended for use in animal models.